



McCann clay plain roof tile collection



Continuing a tradition of **excellence** with **innovation**



PHALEMPIN
17x27 Clay Plain Tile



CHILWORTH & CHARTWELL
17x27 Clay Plain Tile



STE FOY
17x27 Clay Plain Tile



HUGUENOT
20x30 Large Clay Plain Tile

Roofscaping at its best

Visit us
www.mccannltd.com

Why choose McCann clay roofing tiles?



Established in 1993, based in Essex, McCann Roofing Products have 25 years operational experience in the UK. We are specialist importers and distributors of natural and man-made building products.

To ensure quality and reliability of supply, we source our products from some of the largest producers in Europe, servicing the South of England. We offer a unique and personal service and in partnership with our suppliers, our team's extensive industry knowledge gained over 25 years, will enable our customers to source the correct products, preparation treatments, they ensure consistency and long lasting quality.



- > **Tile match and sample service**
- > **Quantification of roof plans**
- > **Specialists in natural roofing products**
- > **Same day collection service**
- > **Affordable prices available on all roofing products**

Professional Service

Our experienced sales team are happy to offer expert roofing knowledge, guidance and recommendations on your product selection. We supply to the South of the U.K. and our prime location, off the M25/A13 makes for easy collection and delivery. We are committed to provide products at affordable prices with expert advice and fast turnaround.

Contents

PAGE 2 - WHY CHOOSE McCANN?

PAGE 3 - PHALEMPIN 17x27 PLAIN TILE

PAGE 4 - CHILWORTH HANDCRAFTED 17x27 PLAIN TILE

PAGE 5 - CHARTWELL 17x27 PLAIN TILE

PAGE 6 - STE FOY 17x27 PLAIN TILE

PAGE 7 - HUGUENOT 20x30 PLAIN TILE

PAGE 8 - ROOF TILE ACCESSORIES

Manufacturing Standards

McCann European manufacturing partners Edilians fully comply with the requirements of BS EN 1304; the European Standard for clay tiles & fittings & are manufactured under a Quality Management system certified to comply with ISO 9001.

Installation

All tiles, fittings & accessories should be installed in accordance with the recommendations given in BS 5534: the British Standard Code of practice for slating & tiling. Sitework should be carried out in accordance with BS 8000-6: the British Standard for workmanship on building sites. Contact McCann for technical support including estimates and fixing specification.

30 Year Guarantee

Edilians clay roof tiles are covered by a comprehensive 30-year guarantee of durability provided that they have been installed in accordance with BS 5534 & BS 8000-6.



Every effort has been made to ensure reasonable accuracy of all products shown in this brochure. The product colours shown in this publication can vary due to the limitations of the production process. With this in mind we advise all customers to view a sample of the actual product. McCann and it's manufacturer's is continually innovating and improving its products and services. Therefore, we reserve the right to change product specifications without notice. All products are subject to availability and the company's standard conditions of sale.

Phalempin 17x27 Clay Plain Tile

Ideal for new build and refurbishment projects.



An appealing traditional plain tile designed to add distinction and character to pitched roofing and tile hanging.

The 17x27 traditional clay plain tile is produced at Phalempin in the Normandy region in France, with appealing textured sand finish and thickness that you would normally associate with expensive hand made clay tiles.

The Phalempin range offers a variety of mellow mature colour tones with some pre-mixed blend options that would enhance any quality new build or period refurbishment projects providing a sympathetic indigenous solution at an affordable price. Unique anti-capillary channels ensure enhanced performance at roof pitches at 30° and above.



VAL DE SEINE

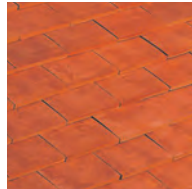
Phalempin is available in a number of attractive colours



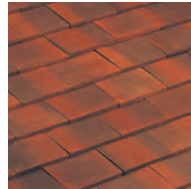
AMBER



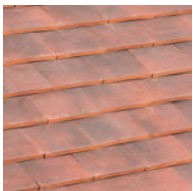
WEATHERED



RUSTIC RED



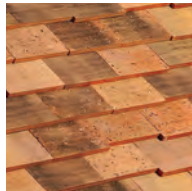
VOLCANO



VAL DE SEINE



VINTAGE



MILLENNIUM

To overcome any minor shade variations inherent in the production of natural clay products, we recommend that tiles are mixed from at least 3 pallets on site. The colours shown here are only as accurate as allowed for by the printing process. Product samples are available on request.

Features include:

- > Beautiful traditional colours and textures
- > Low 30° roof pitch guarantee
- > Unique anti-capillary channels
- > Comprehensive 30 year durability guarantee
- > Pre-mixed blend options



Technical data

Quantity per pallet: 1088 tiles

Coverage at 100mm gauge: 60.0 tiles per m2

Batten gauge (variable): 100mm roof 115mm vertical

Overall length: 270mm

Overall width: 170mm

Cover width: 170mm

Minimum headlap at 100mm gauge: 70mm

Weight per tile: 1.1kg

Weight per m2 at maximum gauge: 65.0kg

Minimum roof pitch: 30°

Batten coverage m2 at 100mm gauge: 10.0m

Batten sizes: 38x25mm for rafter centres up to 600mm

Tile nail: 38/40 x 2.65mm aluminium clout head

*Except Millennium Mix; minimum pitch: 35°

Phalempin accessories see page 8



VERGE TILE AND A HALF



UNIVERSAL VALLEY TILE



HALF ROUND NON INTERLOCKING RIDGE

Chilworth 17x27 Handcrafted Clay Plain Tile

Perfect for all historic and traditional roofing projects.



The Chilworth is manufactured with a rustic appearance and is the perfect choice for historic roofs.

In following tradition, we offer you a tile to create your own authentic style. After grinding and extruding the clay, the tiles are dried with wood bark and then fired with sawdust. This manufacturing process uses 100% green energy.

Traditional firing techniques are used, with a wood fire, to create unrivalled blends of colours and hues within each batch. Tiles are fired at an average temperature of 1000° for 2 days, with subtle variations depending on the position of tiles within the kiln ensuring each tile is unique in shape and finish. With its Vézère colour, this new tile perfectly matches local English Heritage.



The Chilworth is available in Vézère traditional colour



VÉZÈRE

To overcome any minor shade variations inherent in the production of natural clay products, we recommend that tiles are mixed from at least 3 pallets on site. The colours shown here are only as accurate as allowed for by the printing process. Product samples are available on request.

Discover the Vézère colour, in red and brown tones, with its crafted irregular surface finishes, to perfectly display the authentic and timeless appeal of traditional English roofs.



Features include:

- > A distressed surface and tail
- > A format adapted for ancient roofing
- > Variable tile length
- > Strong and durable
- > Traditional appearance



Technical data

Quantity per pallet: 720 tiles

Max Batten Gauge: 100mm

Number per m²: 60

Tile Weight: 1.38kg

Thickness: 12.5mm

Overall dimension: 275 x 170mm

Coverage per m²: Between 53 and 58.5 tiles

Nominal gauge: From 95 mm to 105 mm

Linear metres of battens per square metre of roof:
From 9.52 ml to 10.53 ml

Tile nail: 38/40 x 2.65mm aluminium clout head

Chilworth accessories see page 8



TILE AND A HALF



EAVE



BONNET HIP

Chartwell 17x27 Clay Plain Tile

Full range of colour-matched accessories.



The Chartwell is a traditional clay plain roof tile produced at Phalempin Tilery in Northern France.

The Edilians Phalempin factory in Northern France produces some of their most popular clay roof tiles, namely their 17 x 27 and Chartwell plain tiles, as well as the fittings and accessories to match.

With a workforce of just 30 people, more than 45,000 tonnes of clay plain tiles and 2000 tonnes of accessories are produced annually at Phalempin, 75% of which are exported to the UK, due in part to the factories' location in Northern France, but also certainly due to the quality and popularity of the wide range of colours available.

The Chartwell is available in two traditional colours



HERMITAGE



MURROW

To overcome any minor shade variations inherent in the production of natural clay products, we recommend that tiles are mixed from at least 3 pallets on site. The colours shown here are only as accurate as allowed for by the printing process. Product samples are available on request.

Features include:

- > Distressed, uneven surface gives the appearance of mature, seasoned hand-made tiles
- > Ecologically friendly product with high residual value
- > Comprehensive ventilation systems including dry-fix option
- > Full range of colour-matched accessories



Technical data

Quantity per pallet: 896 tiles

Coverage per m²: 59

Tile size: 270mm x 170mm

Nominal gauge : 100mm

Linear cover: 170mm

Headlap (min): 70mm at 100mm gauge

Unit weight in Kg: 1.3

Weight: 77 Kg per m²

Minimum roof pitch: 35°

Batten coverage: 10m per m²

Recommended batten size: 25 x 38mm

Nail size: 38/40 x 2.65mm

Chartwell accessories see page 8



TILE AND A HALF



BONNET HIP



HALF ROUND NON INTERLOCKING RIDGE

Ste Foy 17x27 Clay Plain Tile

Universal & technological with established appealing qualities.



The plain Ste Foy tiles have been produced at Sainte Foy l'Argentiere, in the heart of the Rhone valley, for over a hundred years.

A hundred years of experience, using clays of the highest quality, give the products a level of finesse, that is quite exceptional, and technical qualities, particularly in terms of resistance to frost, bending and permeability, channels ensure enhanced performance at roof pitches at 35° and above.

The variety of colours in the Ste Foy range offers a great richness of materials and shades. You can mix them as you wish so as to emphasise a particular look, or indeed create an effect of your own.



STE FOY - CHEVREUSE

Ste Foy is available in six striking colours



ROUGE ETNA



MILLESIME



BROWN



CHEVREUSE



ROUGE NUANCE



TERRE DE BEAUCE

To overcome any minor shade variations inherent in the production of natural clay products, we recommend that tiles are mixed from at least 3 pallets on site. The colours shown here are only as accurate as allowed for by the printing process. Product samples are available on request.

Technical data

Quantity per pallet: 720 tiles

Coverage per m²: From 59 to 65

Nominal gauge: From 90mm to 100mm

Overall length: 272mm

Overall width: 170mm

Working width: 170mm

Laid: Broken bonded

Unit weight in Kg: 1.20

DTU Implementation: 40-23

Tilery: Ste Foy l'Argentière Reference 501

Linear metres of battens per square metre of roof:
From 10 ml to 11.11 ml

Features include:

- > New Millésime range with irregular hanging lengths
- > Plain tiles best seller
- > Unique colour tones
- > High quality clays
- > Easy to implement



Ste Foy accessories see page 8



TILE AND A HALF



BONNET HIP



HALF ROUND NON INTERLOCKING RIDGE

Huguenot 20X30 Clay Plain Tile

Combining economy
with fine clays.

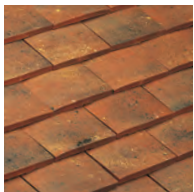


A tile at the right price, the 20x30 tile provides an economical solution over traditional size plain tiles.

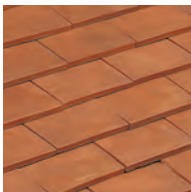
The Plain Huguenot draws its remarkable quality from the renowned clays of the Beauvais region. Manufacturing procedures and firing do the rest. The 20x30 is larger than traditional flat tiles. Once installed, you barely notice the difference. However, the difference is appealing when it comes to cost and installation. Because of its size, the 20x30 allows you to recreate the appearance of roofs installed with traditional plain tiles with economical results is a bonus.

The Plain 20x30 Huguenot gives a very pure line to the most ornate roofs. It is available in a wide range of colours to satisfy local demands, both in new build and renovation.

20x30 is available in a number of attractive colours



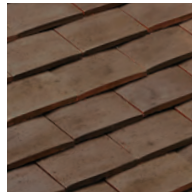
ALEZANE
(PRE MIXED BLEND)



BURNT RED



QUERCY



WEATHERED



SLATE



PAYSAGE
(PRE MIXED BLEND)



GABARRE
(PRE MIXED BLEND)

To overcome any minor shade variations inherent in the production of natural clay products, we recommend that tiles are mixed from at least 3 pallets on site. The colours shown here are only as accurate as allowed for by the printing process. Product samples are available on request.

Features include:

- Excellent value for money
- Perfect for new build and renovation
- Discreetly shouldered cross-camber
- Low pitch (30°) suitability



Technical data

Quantity per pallet: 660 tiles

Coverage: 43,5 tiles per m²

Batten gauge: 115mm roof

Overall length: 300mm

Overall width: 200mm

Cover width: 200mm

Minimum head lap at 115mm gauge: 70mm

Weight per tile: 1.6kg

Weight per m² at 100mm gauge: 69,6kg

Minimum roof pitch: 30.00 °

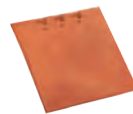
Batten coverage m²: 8,7m

Batten sizes: 38x25mm for rafter centres up to 600mm

Tile nail: 3/8" x 2.65mm aluminium clout head

* As tested at BRE. The minimum pitch of 30° is not suitable for a sprocket detail. For rafter lengths in excess of 6 metres please contact McCann for further details.

20x30 accessories see page 8



TILE AND A HALF



BONNET HIP



HALF ROUND NON INTERLOCKING RIDGE

Technical Support



Need help with your roof tiles?
Please contact our team of
experienced professionals.

Customer Service



Telephone: 01375 397 140
Opening times:
Mon - Fri: 8.00am to 5.00pm

Edilians Guarantee



30 year durability guarantee
Ask for details.



Head Office:

**McCann Roofing
Products Limited**

Askew House
Askew Farm Lane
Grays
Essex
RM17 5YL

☎ 01375 397 140

📠 01375 397 141

✉ sales@mccann.ltd.uk

🌐 www.mccannltd.com



Universal selection of clay plain roof tile fittings and accessories

Clay plain roofing tiles accessories are available in a selection of colours designed to match your roof.
For further details please call us on 01375 397 140



Eave/Top Tile

Length overall: 200mm
Overall width: 170mm
Reference: 500.13



Tile and a Half

Length overall: 268mm
Overall width: 255mm
Reference: 500.95



Half Tile

Length overall: 268mm
Overall width: 83mm
Reference: 500.01



Half Round Ridge Non Interlocking (330mm)

Height: 110 mm
Reference: 718



Half Round Ridge End Cap

Length overall: 325mm
Overall width: 310mm
Reference: 807



Third Round Hip Ridge

Length overall: 350mm
Overall width: 265mm
Reference: 778



Hog's Back Ridge (330mm)

Height: 100mm
Reference: 719



Hog's Back Ridge End Cap

Length overall: 300mm
Overall width: 295mm
Reference: 808



Bonnet Hip

Length overall: 285mm
Reference: 760



Universal Valley 45°

Length overall: 290mm
Overall width: 315 mm
Reference: 500.146



French Hip

Length overall: 275mm
Overall width: 170/85mm
Reference: 759



French Hip Foot

Length overall: 275mm
Overall width: 145/90mm
Reference: 864



Left Hand Independent Cloaked Verge Tile

Height: 185mm
Reference: 500.44



Right Hand Independent Cloaked Verge Tile

Height: 185mm
Reference: 500.45

Fixing Specification: We provide a site specific service on roof fixings to ensure your roof is designed & installed in accordance with BS 5534.

Vertical Tiling Accessories



Ornamental Club Tile

Length overall: 270mm
Overall width: 170mm
Reference: 500.52



Left Hand 90° Degree External Angle

Height: 270mm
Reference: 500.151



Right Hand 90° Degree External Angle

Height: 270mm
Reference: 500.150

Vertical tiling accessories are only available on 17x27 plain tiles.

Roof Finials



Finial Small Model

Height: 475mm
Reference: 982



Slender Finial

Height: 425mm
Reference: 983



Pine Cone Finial

Height: 450mm
Reference: 984

The finial is a McCann terracotta accessory that closes off the angles in complete harmony with the roof lines.

Ventilation Tiles



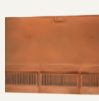
Clay Ventilation Tile

Length overall: 270mm
Overall width: 170mm
Reference: 500.20



Ventilating Tile 20x30 Kit 3 pieces

Length overall: 300mm
Overall width: 200mm
Reference: 510.21



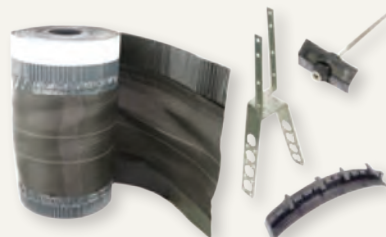
uPVC Ventilation Tile

Width: 510mm
Length: 270
Depth: 12mm

Ventilation tiles are available in a wide range of colours.

Dry Fix System

Faster, cleaner, more effective solutions for all roofs.



Dry fix system for non-interlocking ridges and hips

Components:

- Ventilated ridge/hip roll (6m x 300mm)
- Universal sealing joint with clamping plates
- Batten fixing straps
- 100mm stainless steel screws

